

MEMBER OF KADIN INDONESIA



KADIN INDONESIA

Indonesian Chamber of Commerce and Industry
Kamar Dagang dan Industri Indonesia



AshCore

PT AshCore Sentra Internasional
Committed To Clean Energy



AshCore Company Profile

Biomass fuel supply solutions company



+62-856-100-3773



www.ashcores.com



bd@ashcores.com



One Pacific Place - Level 15, Jl. Jend. Sudirman Kav. 52-53 Jakarta 12190, Indonesia

Company Outline

Company Name : PT AshCore Sentra International

Headquarters : One Pacific Place – Level 15, Jl. Jend. Sudirman
Kav. 52–53 Jakarta 12190, Indonesia

NIB : 09092501120916

NPWP : 1000 0000 0549 0504



MEMBER OF KADIN INDONESIA
Indonesian Chamber of Commerce and Industry
Kamar Dagang dan Industri Indonesia

Company Registration Number:
24293174-25112832008

Company Overview

AshCore is an Indonesia-based biomass fuel sourcing and supply company, with a primary focus on Palm Kernel Shell (PKS) for international industrial and power generation markets. Through an established sourcing and supply coordination network supported by direct partnerships with producers, AshCore delivers cost-efficient, reliable, and technically suitable biomass fuel solutions.

In addition to PKS, AshCore also supplies biomass briquettes and charcoal to support diverse energy requirements.

AshCore ensures stable supply, consistent quality, and commercially competitive PKS delivery, while maintaining alignment with applicable sustainability and operational standards. Our approach emphasizes transparent coordination, operational reliability, and long-term partnership.



Our Goals

To provide reliable and cost-efficient biomass fuel solutions that reduce reliance on fossil fuels while maintaining stable and dependable operations across diverse energy applications. We aim to become a trusted supply partner, delivering consistent alternative solid fuel solutions to support long-term energy needs, and contributing to the 2030 SDGs through responsible and environmentally conscious procurement practices.

Our Core Values

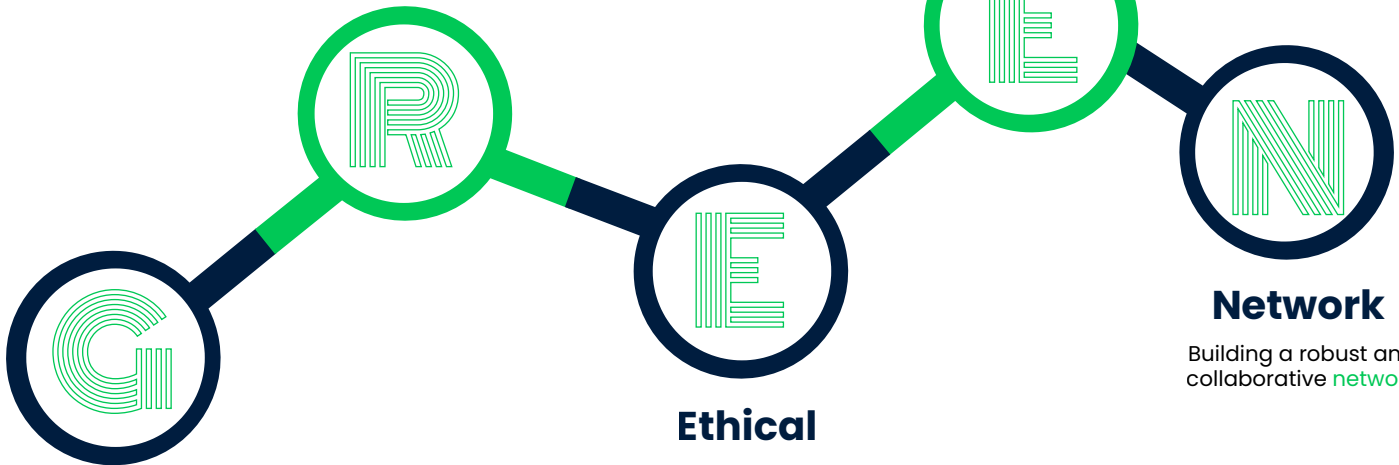
GREEN

Striving for operational **excellence**
and superior product quality in the
PKS market

Excellence

Committing to **responsible**
sourcing and environmental
stewardship in all operations

Responsibility



Network

Building a robust and
collaborative **network**

Ethical

Committing to responsible sourcing
and environmental stewardship in all
operations

Growth

Fostering sustainable **growth**
for our partners, our business,
and the environment





Why Does Biomass Energy Matters?



Driving Carbon Emission Reduction

Renewable energy plays an essential role in reducing carbon emissions and building a cleaner, more sustainable energy system.



Biomass as a High-Efficiency Renewable Fuel

Biomass offers high calorific value, stable combustion performance, and relatively low emissions, making it a strong and reliable renewable fuel option.



Ideal for Power Plants, Industrial, F&B, and Household

Biomass is used across biomass power plants, co-firing systems, industrial heating, household cooking and heating, the F&B sector, and premium smoking applications requiring clean and consistent charcoal performance.



Energy Diversification & Supply Stability

Biomass fuel plays an important role in diversifying energy sources and reducing over-reliance on a single type of fuel. By serving as an alternative solid fuel, biomass supports more stable energy supply



Indonesia's Strategic Biomass Potential

Indonesia holds significant potential to support the energy transition through abundant biomass resources derived from the palm oil and coconut industries.

Global Biomass Energy Trends



Rising Global Demand

Countries in Asia, Europe, and the Middle East are increasingly shifting to biomass as a cleaner alternative to coal.



Stricter Emission Policies

Governments are enforcing carbon-reduction targets, driving industries to adopt renewable fuels like biomass.



Stable Long-Term Market

Biomass is forecasted to remain a key renewable energy source, ensuring steady demand and long-term supply opportunities.

Biomass for a Better Future

Our biomass initiatives not only provide clean and efficient energy but also contribute directly to the United Nations Sustainable Development Goals (SDGs), supporting a more sustainable and responsible future.



7 AFFORDABLE
AND CLEAN
ENERGY



13 CLIMATE
ACTION



8 DECENT WORK
AND ECONOMIC
GROWTH



17 PARTNERSHIPS
FOR THE GOALS



15 LIFE
ON LAND



8 INDUSTRY,
INNOVATION, AND
INFRASTRUCTURE



Our Biomass Solutions

Palm Kernel Shell



Briquettes

Clean-burning, long-lasting solid fuel for F&B such as barbeque, household use, and premium heating applications, shisha or hookah.

A high-calorific biomass fuel suitable for power plants, co-firing, and industrial heating.

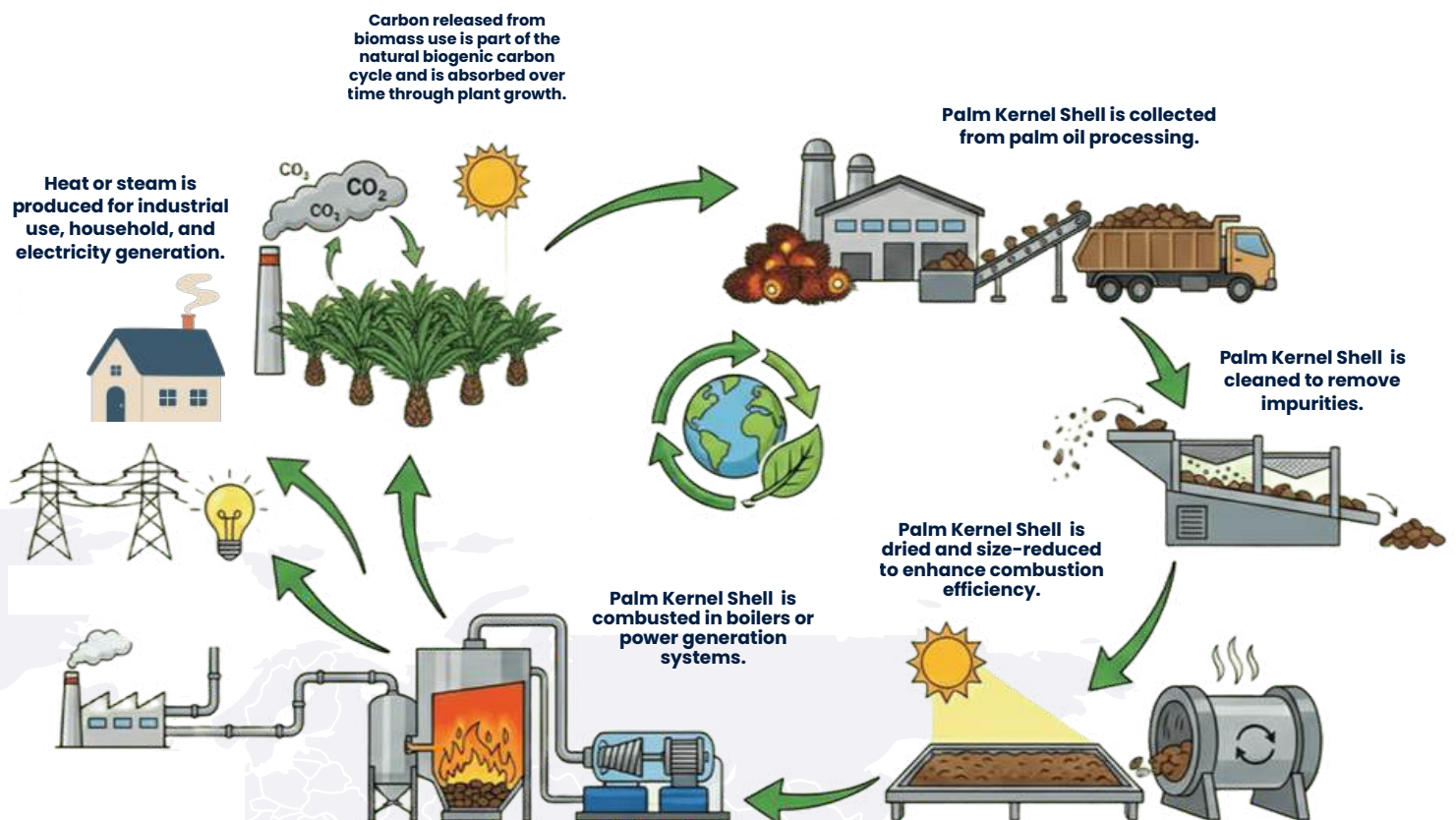


Charcoal

High-quality charcoal with consistent performance for industrial use, culinary production, and premium smoking applications.

How Palm Kernel Shell Biomass Fuel Works

Biomass has gained attention as a practical alternative fuel, particularly for thermal applications where cost efficiency and fuel flexibility are critical. Driven by broader global energy transition trends and increasing focus on efficiency and diversification, biomass fuels such as Palm Kernel Shell (PKS) offer a viable option to complement existing energy systems.



Biomass Fuel

Palm Kernel Shell

For Every Need



Power Plants & Energy Producers



Cement Factories



Steel Mills & Metal Processing Industries



Manufacturing & Industrial Boilers



Paper & Pulp Industries



Textile and Garment Factories



Food Processing & Drying Industries



Brick, Ceramic, and Kiln Operations



Chemical & Pharmaceutical Industries



Export Buyers Seeking Renewable Fuel Sources

AshCore PKS Specifications

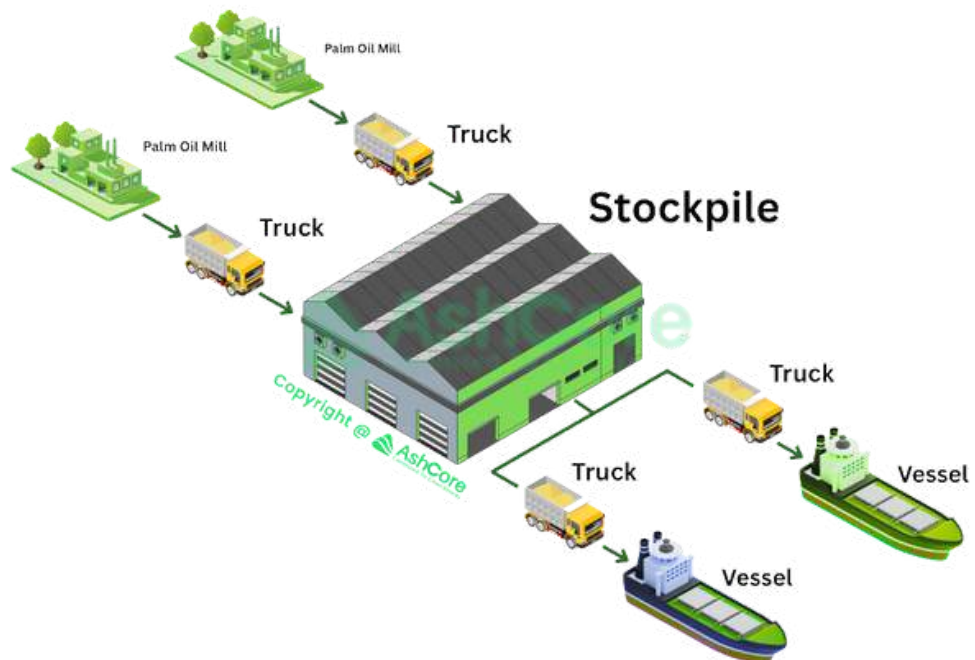
- Supply Capacity: Up to 50.000 MT / Month
- MOQ: 10.000 MT
- Variety : Dura & Tenera
- Size Distribution: 3-5 MM
- Place of Origin: Indonesia
- Incoterm : FOB / CIF / CFR
- Payment : TT / LC

Product Specification

- Moisture: Max 20%
- Ash content: Low Ash
- Chlorine: Max 0,1%
- Sulphure: Max 0,1%
- Impurity: Max 0,5%



Processing Flow



Advantages of Indonesian Palm Kernel Shell

✓ Abundant Availability

- Indonesia is one of the world's largest palm oil producers.
- Every year, palm kernel shells (PKS) are available in large, stable, and sustainable quantities.

✓ High-Quality Fuel

- Calorific value (CV): 4,100 – 5,000 kcal/kg (dry basis)
- Moisture content: 8–12% (dry PKS), ensuring efficient combustion.
- Ash content: 1–3%, relatively low, reducing residues after burning.
- Density: 0.55–0.65 g/cm³, easy for handling and storage.
- Consistent quality suitable for industrial boilers, kilns, and power generation.

✓ Easy to Handle and Store

- Hard and dry form allows easy transportation, handling, and storage compared to other biomass types like sawdust or coconut shells.

✓ Cost-Effective

- Locally abundant byproduct makes PKS affordable and easy to source, lowering operational costs for industries.

Why You Should Choose Us?



Premium Product Quality

We provide high-quality biomass products that are consistent and meet international standards.



Competitive & Stable Pricing

We offer cost effective pricing backed by long-term supply commitments, giving buyers financial predictability.



Sustainability Focused

Our products help buyers meet ESG requirements, reduce emissions, and support global decarbonization goals.



Responsive Communication

We provide fast, clear, and transparent communication to ensure an efficient and professional buying experience.



Trusted Partnerships

We prioritize long-term relationships built on integrity, reliability, and mutual growth.



Long-Term Commitment

Prioritizing long-term partnerships to support mutual business growth.



Integrity and Trustworthiness

Honesty, openness, and strong commitment to maintaining reputation and fulfilling every cooperation agreement.

Ready to Power a Sustainable Future?

Partner with us in bringing sustainable
and dependable energy



Contact Us



+62-856-1000-3773



bd@ashcores.com



www.ashcores.com



One Pacific Place - Level 15,
Jl. Jend. Sudirman Kav. 52-
53 Jakarta 12190, Indonesia

Headquarters

